

Take Time Out  
to assemble a  
Portable Car and Work Kit

This could help make the hours  
after a major disaster more comfortable and safe.

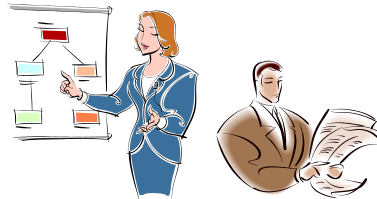
Car kit

- Snack-type, foods  
(granola, bars, nuts, crackers)
- Comfortable shoes
- First aid Kit
- Fire extinguisher:  
(ABC type)
- Blanket
- Local maps & compass
- Flashlight & batteries
- Tools (screwdriver/pliers)
- Heavy work gloves
- Ziploc bags, toilet tissue,  
newspapers
- Good book

Work Kit

- Snack-type foods
- Bottled water
- Comfortable shoes
- First aid kit
- Blanket
- Flashlight & batteries
- Essential medication(s)
- Battery operated radio
- Ziploc bags, toilet tissue
- Emergency instructions
- Heavy work gloves

**IT'S ONLY A MATTER OF TIME.....**



For more information please contact the San Mateo Office of Emergency Services  
1040 East Hillsdale Blvd, Foster City, CA 94404 (650) 522-7960

